

## Idu Nammada Lab Pvt Ltd (InVibes)

### Pioneering Digital Transformation with Dynamic RPA Solutions

#### Overview

Founded in Bangalore's tech hub in 2019, InVibes RPA Solutions has been a leading force in Robotic Process Automation (RPA). Our distinctive mix of passion and innovation positions our clients at the forefront of operational efficiency.

#### Vision

Lead the Asian market as the epitome of RPA excellence, championing transformative business growth.

#### Mission

Deliver unparalleled RPA services, nurture our talent pool, and ensure our clientele always possesses a competitive edge.

#### Key RPA Capabilities

---

Automation  
Anywhere  
Expertise

Our team is skilled in leveraging Automation Anywhere to create efficient and effective automation solutions.

---

UI Path  
Mastery

We excel in UI Path, harnessing its capabilities to drive seamless automation in diverse business processes.

---

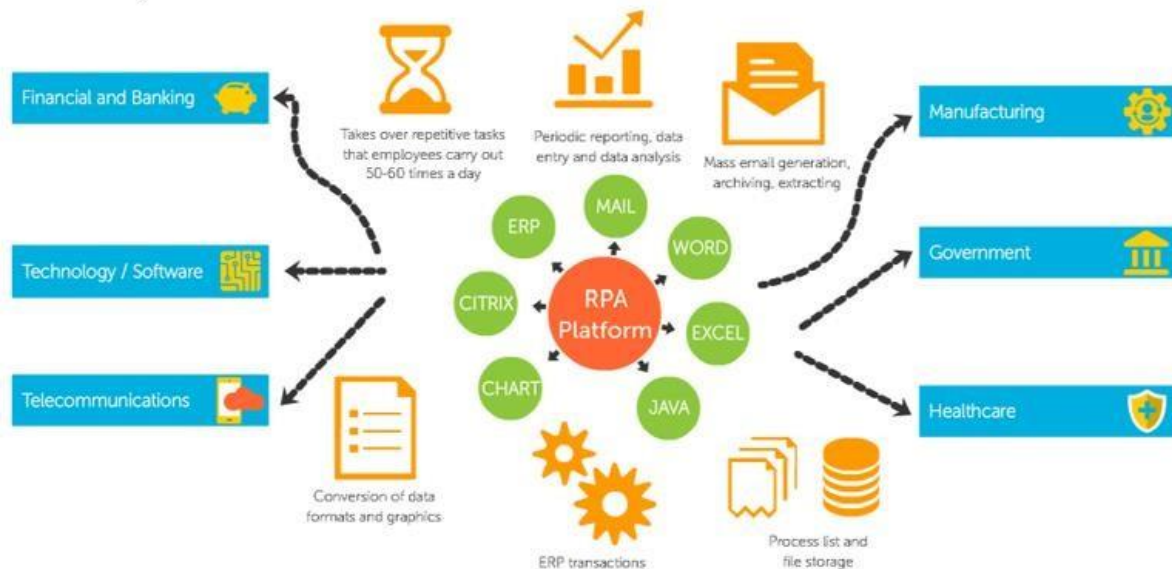
Open Source  
Integration

Our commitment to innovation includes harnessing the power of open-source RPA tools to tailor solutions to your unique needs.

---

## Industries We Serve

- Healthcare
- Financial and Banking Services
- Manufacturing
- Telecommunications
- Government



## Key Offerings

### 1. RPA Product Development

- We specialize in developing robust RPA products that cater to diverse business needs. Our products are designed to automate repetitive tasks, streamline workflows, and drive operational excellence.
- Customized products for specific industry requirements.
- Continuous research and development to stay ahead in the rapidly evolving RPA landscape.
- Refer to **Annexure A** for our product portfolio.

### 2. RPA Services

- Our RPA services are crafted to support businesses in their automation journey. From consultation to implementation, our experts ensure a seamless integration of RPA into existing workflows, maximizing efficiency and minimizing manual effort.
- End-to-end automation solutions tailored to client needs.
- Training and support to empower teams in leveraging RPA effectively.
- Refer to **Annexure B** for our services.

### 3. Cloud Development and Migration Capabilities

InVibes is at the forefront of cloud development and migration services, offering tailored solutions designed to drive business transformation and accelerate digital initiatives. Our expertise shines through in four key use cases:

- **Industrial IoT – Asset Management:** Leveraging cloud infrastructure, we deliver comprehensive asset management solutions for renewable energy assets. Our capabilities include real-time monitoring, predictive maintenance, compliance adherence, and scalable analytics.
- **Software as a Service – GST and TDS Compilation:** InVibes specializes in cloud-based SaaS solutions, simplifying GST and TDS compliance processes. Our offerings encompass efficient invoice management, seamless integration, compliance assurance, and real-time reporting.
- **Asset Documentation Management System:** With our cloud-based asset documentation management system, we centralize document storage and access for mining companies. Our capabilities ensure secure, mobile-friendly access, compliance adherence, and streamlined operations on the factory floor.
- **Mining Info Management:** InVibes excels in streamlining data access and interpretation for mining companies. Through cloud integration with SAP systems and third-party portals, we enable real-time inventory updates, compliance adherence, and operational efficiency.
- Refer to **Annexure C** for use cases related to cloud development capabilities.

At InVibes, we're dedicated to delivering innovative cloud solutions tailored to your business needs. Whether you're embarking on a digital transformation journey or seeking to optimize existing processes, trust InVibes for expert cloud development and migration services. Let us empower your organization to thrive in the digital age.

### 4. RPA Staffing

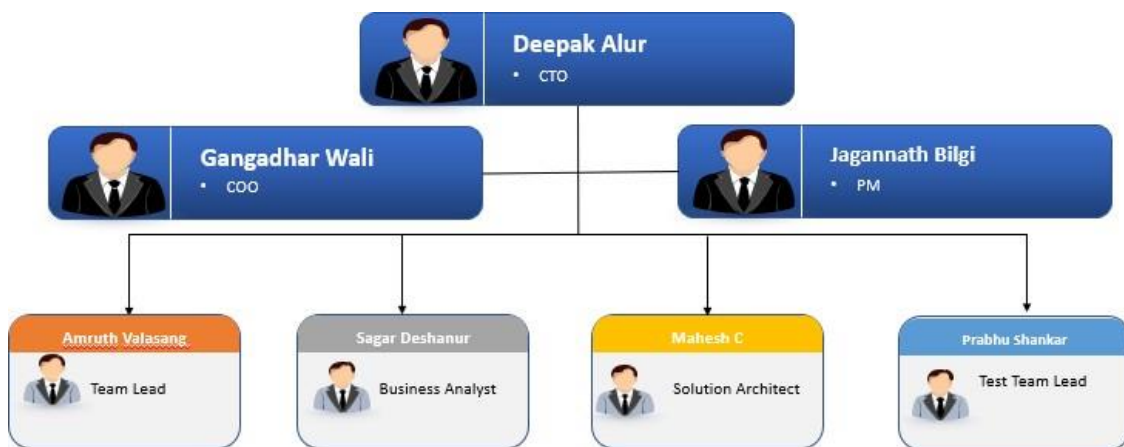
- Learn about our RPA staffing solutions, providing organizations with skilled talents for accelerated team ramp-up.
- Refer to **Annexure D** for our staffing.

## Diverse Client Portfolio

Our esteemed clientele ranges from public sector giants to innovative unicorns. We've been privileged to collaborate with Bharath Earth Movers Limited (BEML a Unicorn PSU), JSW Steel, Transform Edge, and Alten Calsoft, Asmaitha Wireless Technologies Pvt Limited among others.

## Team and Culture

Behind InVibes stands a team of 20 dedicated professionals, the pulse of our innovation and excellence.



## Awards & Certifications

1. Being acknowledged as one of the "10 Most RPA Start-ups" and featured in the 2022 edition of CIO Insider is a notable achievement, highlighting our standout position in the realm of Robotic Process Automation (RPA) start-ups. We're proud to have this recognition as a testament to our unwavering commitment to excellence in the RPA domain.



**CIO Insider Magazine Coverage**

## INVIBES

### Offering End-to-End Innovative Solutions and Services in the Process Automation Space

"We are glad that INVIBES became our partner through the open tender process, for automating our Employee Medical Direct Billing Claim Process. This has helped us to deliver much better healthcare services to our executives, employees, and dependants by easing the hospital admission procedure and post-discharge direct billing process in the SAP by using RPA bots. This has not only simplified our internal workflow by minimizing staff efforts but also improved employee experience. This automation has been achieved using RPA bots, workflow, and multi-enabled technologies. We thank INVIBES for the right implementation of this solution," says V C Anand, CIO BEMH.

The RPA is an emerging technology and often involves creating awareness among customers on business use cases specific to their digital operations. Before offering any business an RPA solution it's crucial to understand customer's existing processes, and identify candidate digital processes for automation along with process re-engineering. It is also important to evaluate open source tools to enable cost effective solutions for businesses. INVIBES, one of the leading RPA startups in Bangalore is offering top-notch RPA powered solutions to its clients. Partnering with product vendors like UiPath and Automation anywhere has enabled the company to strengthen its offerings. Industry reports from Gartner and Forrester have enabled it to position its services and grow faster in the market.

The Digital workforce is an industry catchword for RPA bots, which impacts companies, employees, partners, and other individuals associated with business processes. This means any process re-engineering must be analyzed from all perspectives for defining the objectives of the Digital Transformation initiative - Irrespective of the size of the company. "In most of the processes, cutting labour costs is not the key objective - service availability 24/7, increasing throughput by framing decision making by Digital Workforce, will lead to competitive advantages", says Deepak Alur, CTO of INVIBES.

Enterprises often do not take a quantum leap in adopting Digital Workforce, they pilot out a few

implementations, watch the ROI and then proceed. With many interesting cloud services, RPA projects can deliver more outcomes than the existing NOI, RPA processes. In lesser time and round the clock, says Gangadhar Wali, (Co-Founder and Vice President) of INVIBES.

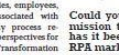
In the SMB customer segment, the challenge is often on the cost of licenses and the support available to resolve issues even though they are convinced of the advantages of a Digital Workforce. Our USP has been addressing this concern by offering RPA as a service - says Vishwanath Sangoji, (Co-Founder and Vice President Business developments) of INVIBES. He further adds that process re-engineering leads to a new perspective of processes that were not imagined earlier. In one of our projects, the benefits gained by our customer due to the new perspective was substantial compared to the original perceived objective.

Could you tell us about the vision and mission that INVIBES built upon? How has it been maintaining its pace in the RPA market?

Vishwanath Sangoji, Co-Founder and Vice President Business developments, INVIBES works with the vision to become a globally recognized, end-to-end process automation organization that offers innovative solutions and services in the process automation space. In addition, our vision is to provide unmatched solutions and services to clients and create customer value by helping them take a leap in process



Gangadhar Wali, Co-Founder and Vice President of INVIBES.



Vishwanath Sangoji, Co-Founder and Vice President Business developments of INVIBES.

automation where information technology (IT) and operations (Ops) will be combined to reduce human effort and improve workflow efficiency.

What are the kinds of flagship RPA offerings delivered to clients and what are the expectations met through these services?

Gangadhar Wali, Co-founder and Vice President, INVIBES Often, our customers spend considerable effort in running their operations from a collation of information to periodical compliance requirements. The expectation of these enterprises is to significantly reduce these operational efforts at min or significant costs and deliver bigger value after automating their process.

Our RPA offerings include INVIBES RPA Services Team that collaborates with customers to automate their Business Processes by discovering new automation avenues, reducing manual tasks, and maximizing value by saving costs. Our RPA as a service is intended to reduce the CAPEX burden of deploying RPA within the business as well as the liability of hiring RPA talents by leveraging our RPA expertise and solutions throughout the customer journey. The POC-as-service to businesses reduces the initial RPA investment and risk to customers. Once our customers are convinced with ROI and the advantage of implementing RPA-as-a-service, we implement the same to meet automation objectives.

Cast some light on the RPA solutions that the company is currently working on?

Deepak Alur, CTO, INVIBES Often, process automation comes at a cost that many customers in our market segment cannot afford but would be in the need to simplify their business operations. For such customers, INVIBES is focused on building RPA as a service to help customers avoid CAPEX and leverage RPA as an OPEX

model while still delivering the same value. Moreover, we are currently focused on delivering solutions related to tax processing which often is the most tedious and time-consuming among other business-focused processes.

Enlighten us about the success of the company's intervention in solving a complex scenario highlighting the solution or service and strategies deployed to draw positive outcomes.

Deepak Alur, CTO of INVIBES says - Recently, we delivered a turnkey solution to one of the public sector units. Our RPA based solution helped to build a platform to automate health claim processing and moderate their healthcare offering to their employees and their dependents, across India. The solution built on this platform helped simplify their entire workflow by improving the admission process and hence saving valuable lives and quick discharge by automating the claim settlement process.

Our solution helped to reduce the departmental claims reimbursement effort by 90 percent, nullify duplicate claims, reduced claim errors and avoid fraudulent claims, and most importantly have a central information repository that enables them to take seasonal decisions based on data from all their branches across India.

What is the future roadmap envisioned for INVIBES?

Gangadhar Wali, Co-Founder and Vice President, INVIBES This year we have made significant progress in delivering solutions to Govt PSU, financial sectors, and healthcare sectors. Our focus this year is on the financial services domain with our RPA as a service model in the areas of invoice reconciliation, TDS payment process, legacy document transformation, filing of Tax returns (GST), Financial Auditing process, and more.



Deepak Alur, CTO of INVIBES.



Gangadhar Wali, Co-Founder and Vice President of INVIBES.



Vishwanath Sangoji, Co-Founder and Vice President Business developments of INVIBES.

- Achieving the certified Center of Excellence (COE) status from Automation Anywhere underscores our unwavering commitment to excellence and expertise in providing state-of-the-art automation services.

THIS ACKNOWLEDGES THAT

**IDU NAMMADA LAB PVT LTD (INVIBES)**  
RPA/INDIA

HAS MET ALL CRITERIA TO BE DESIGNATED AN

**AUTOMATION ANYWHERE  
CENTER OF EXCELLENCE**

HONORABLE MENTIONS: JYOTI M B

ANUPRIYA

SAMSANDITHA

*Anupriya Saxena*

Anupriya Saxena, Executive Vice President  
Partnerships, Strategy and Operations,  
Automation Anywhere

Designation Effective Through 2020-21

## Strategic Partnerships

These strategic partnerships enable us to leverage the latest technologies and provide unparalleled value to our clients. By aligning with these industry giants, we ensure that our solutions are at the forefront of innovation.

- InVibes proudly stands as a UiPath-certified Business Partner, showcasing our commitment to excellence in Robotic Process Automation (RPA) solutions. As a trusted partner, we leverage UiPath cutting-edge technologies to deliver innovative and efficient automation solutions for our clients.
- InVibes proudly serves as a channel partner for Automation Anywhere, solidifying our commitment to top-tier Robotic Process Automation (RPA) solutions. Additionally, our certified Center of Excellence (COE) from Automation Anywhere exemplifies our dedication to excellence and proficiency in delivering cutting-edge automation services.
- Leveraging the power of AWS, we have seamlessly hosted our RPA services to ensure unparalleled performance, scalability, and reliability.
- GitHub is an integral partner in our RPA journey, streamlining development with robust version control, seamless collaboration, code review, and automated testing through CI/CD integration. Its open-source community connection fosters broader insights, while built-in documentation and issue tracking ensure a smooth development workflow. GitHub accelerates our RPA solutions, enhancing collaboration and code quality.

## What Our Clients Say

"We are glad that InVibes became our partner through the open tender process, for automating our Employee Medical Direct Billing Claim Process. This has helped us to deliver much better healthcare services to our executives, employees, and dependants by easing the hospital admission procedure and post-discharge direct billing process in the SAP by using RPA bots. This has not only simplified our internal workflows by minimizing staff efforts but also improved employee experience. This automation has been achieved using RPA bots, workflows, and mobile-enabled technologies. We thank InVibes for the right implementation of this solution." says **V C Angadi, CIO of BEML**

InVibes transformed our operational efficiency. Their RPA solutions are unparalleled in quality and execution." **Ravindra, Asmaitha Wireless Technologies Pvt Ltd**

"At InVibes, we believe in harnessing the transformative power of RPA to shape the future. Our commitment to excellence and adaptability has been a cornerstone since inception, and it remains unwavering as we look ahead." **Gangadhar Wali, Idu Nammada Lab Pvt Ltd**

## Connect with Us

For a deeper insight into our offerings and potential collaboration avenues,

Gangadhar Wali,

Founder Director

Idu Nammada Lab Pvt Ltd (InVibes)

Email: [g.wali@invibes.in](mailto:g.wali@invibes.in)

Phone: +91 9972344799

[www.invibes.in](http://www.invibes.in)

Idu Nammada Lab Private Limited,  
No. MIG-115, KHB Colony, 2<sup>nd</sup> Stage, 80 Feet Road, Basaveshwaranagar, Bengaluru – 560079

## Annexure A

Product Spotlight: Streamlining Healthcare with Our Medical Claim Settlement System (MCSS)  
[Visual of the product/system in action.]

### The Birth of MCSS: From Frustration to Innovation

In the thick of the pandemic, my mother's hospital discharge became a 10-hour ordeal due to a manual claim process. Tariffs, classifications, and endless calculations—prompting a question: Why not automate this? That frustration birthed our resolve to streamline healthcare processes and innovate.

### Introduction

Our MCSS (Medical Claim Settlement System) addresses two crucial processes: issuing referral letters for cashless facility admission and automating the claim processing workflow. Traditional claim management, predominantly paper-based, is replete with delays, inaccuracies, and administrative bottlenecks. The modern ecosystem demands a digital pivot to accelerate and simplify these processes. Revolutionizing Healthcare Management: In today's healthcare paradigm, the need for efficient and transparent medical claim settlement systems is paramount. Introducing our state-of-the-art Medical Claim Settlement System, poised to redefine how organizations manage medical claims.

### The Challenges & Our Solution

#### 1. Issuing Referral Letters:

##### Manual Process (Before)

- Staff visits the office to apply for a referral letter.
- The CMO (Chief Medical Officer) reviews the request.
- HR validates staff/dependents' data and approves the request.

##### Challenges

- Delays in the manual approval process.
- Potential errors and administrative bottlenecks.
- Increased risk, especially in critical situations.

##### Digital Solution (After)

- Implement an online portal for staff to apply for referral letters.
- Automated approval workflows based on predefined criteria.
- Integration with HR systems for real-time validation.

#### 2. Automated Claim Processing

##### Manual Process (Before)

- Traditional paper-based claim management.
- Workflow and computation logic are handled manually.

##### Challenges

- Delays in claim processing.
- Potential inaccuracies in manual computations.
- Administrative complexities.

##### Digital Solution (After)

- Implement an end-to-end automated claim processing system.
- Utilize workflow automation for seamless progression.
- Incorporate computation logic for accurate calculations.
- Enable real-time tracking and status updates for all stakeholders.

## Customization and Benefits

### Speed and Efficiency:

- Accelerate processes with digital workflows.
- Reduce processing times for referral letters and claims.

### Accessibility:

- Provide a user-friendly online portal for staff interactions.
- Enable real-time access to claim status and information.

### Timely Healthcare Access:

- Expedite the issuance of referral letters for timely healthcare access.
- Reduce delays in claim processing, ensuring timely reimbursements.

### Accuracy:

- Minimize errors through automated validation and computation.
- Ensure accurate and transparent claim processing.

### Compliance:

- Ensure compliance with policies and regulations through automated checks.
- Maintain a secure and auditable digital trail.

### Data-Driven Insights:

- Leverage data analytics for insights into claim trends and processing efficiency.
- Facilitate informed decision-making for continuous improvement.

## Salient Features

- Seamless Employee Experience: Digital claim submissions, real-time tracking, and an intuitive interface.
- Efficient HR Management: Simplified claim management with streamlined workflows and ensured policy compliance.
- Informed Decision-Making for CMOs: Comprehensive data analytics, cost management, and health-centric strategies.
- Empowering Doctors: Efficient claim verification and seamless inter-departmental collaboration.
- Financial Control: Effective monitoring of healthcare costs, insightful reporting, and efficient budget management.
- Customization: Flexibility to adapt to specific organizational needs and workflows.

## Benefits for Your Organization

The integration of our Medical Claim Settlement System heralds manifold benefits like:

Enhanced operational efficiency	Significant cost savings
Unparalleled transparency and compliance	Data-driven decision-making
Elevated employee satisfaction	Streamlined healthcare management
Customizability and scalability	

## Competitive Advantage

Our system not only exemplifies commitment to employee welfare but also presents your organization as a progressive entity, fervently adapting to modern solutions.

## Conclusion

The Medical Claim Settlement System transcends traditional boundaries, delivering value that ripples across all organizational tiers. With this tool in your arsenal, you're poised for financial optimization, improved healthcare management, and palpable competitive advantage.

## Showcasing Our Expertise: Use Cases

Our RPA solutions have empowered diverse sectors, from energy providers to IT frontrunners. Delve into our selected use cases to witness our prowess first-hand.

## Product Brochure

# MEDICAL CLAIM SETTLEMENT SYSTEM (MCSS)



Automated Health Claim Processing | Boost Employee Satisfaction | Reduce lead time and operational costs

SUITED FOR:  
 Large Enterprises | PSU's | Hospitals | TPA's | Private Companies

<p><b>FEATURES:</b></p> <ul style="list-style-type: none"> <li>➤ Centralized Claims Processing with a multi-approval mechanism</li> <li>➤ Dashboard Depicting Claims across all branches</li> <li>➤ Data-Driven Insights for policy improvement</li> <li>➤ Centralized Hospital tariffs</li> <li>➤ Triage fraudulent claims</li> <li>➤ Improved Audit trails</li> <li>➤ Simplified user interface</li> <li>➤ Customizable workflow</li> </ul>	<p><b>BENEFITS:</b></p> <ul style="list-style-type: none"> <li>➤ Reduced lead time to admit employee / dependent, saving precious lives.</li> <li>➤ Significant reduction in overall turnaround time for admission and claims processing</li> <li>➤ Paperless claim processing</li> <li>➤ Uniform Standardized claim computation</li> <li>➤ Boosts Employee Satisfaction &amp; Productivity/Retention</li> <li>➤ Reduced fraudulent claims</li> <li>➤ Lower cost of overall operations</li> <li>➤ Computation of Employee share, employer share and hospital share provided</li> </ul>
---	--

**0** Fraudulent Claims

**8X** faster Referral Letter issue process

**4X** faster Claim Settlement

**75%** decrease in Manpower

**100%** accuracy in Claim Computations

Suitable for Planned and Emergency Hospitalization

ADMISSION

Admission Request

Staff request for admission letter for hospitalisation under cashless facility

Management Review/ Approve

Doctors/HR reviews & approves admission letter to hospital

Treatment & Discharge

Staff/Dependent gets hospitalized, gets treatment & is discharged

POST DISCHARGE

Invoice to MCSS

Soft copies of detained bill and final bill are mailed to MCSS by hospitals

MCSS process claims 24\*7

Claims are processed by MCSS 24\*7

Review by Doctors

Claims review done by Doctors in the portal

Review & Approval by Accounts

Claims review done by Accounts in the portal

Reimburse Voucher

Updating ERP & Create Reimburse Voucher

“

TESTIMONIAL

We are glad to have partnered with Invibes for automating our Employee Medical Direct Billing Claim Process which has helped deliver better healthcare to our employees and dependents. This automation was done through RPA bots and mobile technology resulting in simplified internal workflows and better employee satisfaction.

CIO, BEML

”



**Recognized as Most Recommended RPA start-up 2022 by CIO Insider Magazine.**  
 Idu Nammada Lab Private Limited, Bangalore, Karnataka, India  
 CIN: U72200KA2019PTC125499, **Contact:** Gangadhar Wali, Founder and VP Sales & Delivery  
 ✉ [g.wali@invibes.in](mailto:g.wali@invibes.in) ☎ [+91 9972344799](tel:+919972344799)

## Annexure B

### **RPA Services at a Glance:**

At InVibes, our Robotic Process Automation (RPA) services are designed to revolutionize your business operations. We leverage cutting-edge automation technologies to enhance efficiency, reduce manual efforts, and drive overall productivity.

### **Use Cases: A Showcase of Our Expertise**

#### **1. GSTPro Automate for a Chartered Accountant Firm (RST & Co)**

Scope: GSTPro Automate streamlines the GST filing process. Users upload purchase and sales invoices online or through scanned images/PDFs. The system extracts data, stores it in a database, populates Tally, generates a JSON file, and uploads it to the GST portal. The process includes reconciliation, determining GST payable, making payments, and filing GST returns. The entire workflow is automated for efficiency, accuracy, and timely compliance.

Outcome: GSTPro Automate ensures a seamless and error-free GST filing process. By automating data extraction, reconciliation, and payment, the system significantly reduces manual effort and errors. Users experience faster processing times, accurate GST calculations, and timely filing, leading to improved compliance, cost savings, and enhanced efficiency in financial operations.

#### **2. TDS Payment process Automation for Real Estate Developer (Brigade Developers)**

Scope: TDS Payment & Return Filing Automation.

Outcome: Automation led to a substantial reduction in the time required for TDS payment confirmation. The streamlined process eliminated manual reconciliation efforts, resulting in quicker and more efficient TDS payment and return filing.

#### **3. Invoice Reconciliation system for Telecom Billing Service Provider (CSGI)**

Scope: Validation of end-to-end customer bills.

Outcome: The automation of the bill validation process ensured consistent and error-free billing for all customers, including those who migrated. This refinement in the billing process enhanced accuracy and customer satisfaction.

#### **4. PO Processing for Energy Service Provider (Enphase Energy, USA)**

Scope: PO processing via ERP automation.

Outcome: Automation significantly reduced manual data entry errors in the purchase order (PO) processing, leading to faster and more accurate transactions. This efficiency gain contributed to improved overall operational productivity.

#### **5. HR onboarding System for Leading IT Company (Asmaitha Wireless Technologies Pvt Ltd)**

Scope: Automated HR onboarding from Excel/CSV data.

Outcome: The automation of HR onboarding streamlined the process for new joiners, reducing manual efforts and dependency. This resulted in quick and efficient onboarding, enhancing the overall employee experience.

#### **6. EcoSage SCADA Integration for E&U Service Provider (Nova-Global)**

Scope: Automated data collection from wind turbines and solar plants.

Outcome: Automation reduced the need for manual data collection efforts in remote power plants. Accurate and consolidated real-time power generation reports were generated, enhancing operational efficiency and data accuracy.

#### **7. Legacy healthcare document transformation for IT Services Company (Indegene)**

Scope: Legacy healthcare document transformation.

Outcome: The restructuring of legacy healthcare documents with new templates reduced manual tedious efforts by 90%. This automation brought about a significant improvement in efficiency and accuracy in handling healthcare documents.

These use cases demonstrate InVibes' commitment to digital transformation, offering tailored RPA solutions that address specific challenges and drive positive outcomes for clients across diverse industries.

#### **8. Streamlining Visa Data Integration Process for Visa Processing Company (Medicodio, USA)**

Scope: Automate the Visa Data Integration Process: Save, extract, and submit data from Excel datasheets to the Target Portal (Visa Application), ensuring seamless and accurate processing.

Outcome: Efficient and error-free integration of Visa application data, eliminating manual efforts, reducing processing time, and ensuring accurate data submission on the Target Portal.

#### **9. Invoice Data Transfer Automation (Transorion)**

Scope: Automate the data entry process for TRANSORION by leveraging RPA bots to handle the extraction and entry of invoice data from PDF files into the ERP system. Address challenges such as errors, backlogs, and high operational costs associated with manual data entry. Ensure a seamless and efficient workflow for both import and export invoices received via email.

Outcome: The implementation of RPA at TRANSORION revolutionizes their invoice processing workflow. By automating the data entry from emailed invoices into their ERP system, the company experiences a substantial decrease in errors traditionally associated with manual data input. The elimination of backlogs ensures seamless and efficient processing, even around the clock. This automation not only enhances operational efficiency but also leads to significant cost savings by reducing the need for continuous resource deployment in data entry roles. TRANSORION can now enjoy a streamlined, error-free, and cost-effective invoice management process.

#### **10. AP Invoice Processing for Solar Energy Solution Provider (Enphase Energy, USA)**

Scope: AP Invoice Processing Build an Invoice Workflow System, for tracking all invoices at every level, invoice Acknowledgment, Pending for Clarification, Accounted, Paid, etc by Implementing an Invoice Workflow System for end-to-end tracking.

Outcome: By automating the invoice-to-purchase order (PO) and receipt reconciliation process, the company experienced streamlined accounts payable (AP) payment processing. This significantly reduced manual efforts and improved overall financial efficiency.

## Annexure C

### Industrial IoT – Asset Management

**Scope:** The Industrial IoT – Asset Management solution aims to provide comprehensive asset management and monitoring capabilities for renewable energy assets such as Wind Turbines and Solar farms. It involves reading data from various sources including Scada, FTP servers, and API gateways, processing this data using Python scripts, and storing it in the Google BigQuery database at intervals of every minute. The application server facilitates real-time analytics based on the streaming data received from diverse sources. The solution caters to renewable energy plants located in different countries including India, Thailand, Australia, Japan, Indonesia, and the Philippines.

#### Outcome:

1. **Asset Management:** The solution enables effective management of renewable energy assets by providing real-time insights into their performance, health, and operational status.
2. **Monitoring and Analytics:** Users can monitor the performance of renewable assets through intuitive dashboards and analytics tools. They can analyze trends, identify anomalies, and optimize asset utilization.
3. **Data Integration:** By integrating data from various sources such as Scada, FTP servers, and API gateways, the solution provides a unified view of asset data, facilitating better decision-making.
4. **Scalability:** Leveraging cloud services such as Linux VMs, Managed SQL services, BigQuery, and Lambda Services, the solution offers scalability to handle large volumes of data and accommodate future growth.
5. **Global Reach:** With support for renewable energy plants in multiple countries, the solution caters to a diverse range of customers and geographical locations, fostering global adoption and expansion.
6. **Cost Efficiency:** By utilizing cloud services and automation, the solution optimizes resource utilization, reduces infrastructure costs, and enhances operational efficiency.
7. **Predictive Maintenance:** The solution enables predictive maintenance by analysing asset data in real time, predicting potential failures, and scheduling maintenance activities proactively to minimize downtime and enhance asset lifespan.
8. **Compliance and Reporting:** Users can generate regulatory compliance reports and performance insights, ensuring adherence to industry standards and regulations.

## Software as a Service – GST and TDS Compilation

**Scope:** The Software as a Service (SaaS) solution for GST and TDS Compilation streamlines the process of managing sales and vendor invoices, updating accounting software, and filing GST returns in the portal. It involves receiving invoices from dedicated email IDs, compiling them, and automating the process of updating accounting records and filing returns. The solution is designed to simplify compliance with GST and TDS regulations and ensure accuracy and timeliness in financial reporting.

Outcome:

1. **Efficient Invoice Management:** The solution automates the receipt and processing of sales and vendor invoices from dedicated email IDs, reducing manual effort and minimizing errors in data entry.
2. **Seamless Integration:** By updating accounting software with compiled invoice data, the solution ensures seamless integration between financial records and operational activities, enhancing transparency and accuracy.
3. **GST Return Filing:** Users can file GST returns directly from the portal, streamlining the compliance process and reducing the risk of non-compliance or penalties.
4. **TDS Compliance:** The solution assists in TDS (Tax Deducted at Source) compliance by accurately tracking and reporting TDS deductions, ensuring adherence to regulatory requirements.
5. **Cloud Infrastructure:** Leveraging cloud services such as Linux VMs load balanced for web application and batch jobs, and Storage SQL services, the solution offers scalability, reliability, and performance to handle the processing and storage requirements efficiently.
6. **Time and Cost Savings:** Automation of invoice processing and return filing tasks saves time and reduces administrative overheads, allowing organizations to focus on core business activities.
7. **Real-time Reporting:** Users can generate real-time reports on GST and TDS compliance, providing insights into financial performance and tax obligations.
8. **Enhanced Compliance:** By streamlining the compliance process and providing accurate and timely reporting, the solution helps organizations stay compliant with GST and TDS regulations, mitigating risks and avoiding penalties.

### **Asset Documentation Management System.**

**Scope:** The Asset Documentation Management System is designed to streamline the storage and access of asset-related documents for a large mining company. It involves the creation of a centralized repository where all documents about assets are stored and managed. Users, including those on the factory floor, can access relevant documents by scanning QR codes attached to each asset using a mobile application. The system ensures efficient document retrieval, tracking, and auditing to facilitate seamless asset management and compliance with documentation requirements.

### **Outcome:**

1. **Centralized Document Repository:** The solution provides a centralized location for storing and managing all asset-related documents, eliminating the need for multiple storage locations and reducing the risk of document loss or duplication.
2. **Efficient Document Access:** Users can easily access relevant documents by scanning QR codes associated with each asset, enabling quick retrieval of information and reducing downtime on the factory floor.
3. **Mobile Accessibility:** The mobile application facilitates document access from anywhere within the facility, enhancing convenience and productivity for users working on-site.
4. **Document Auditing:** All document access activities are audited and stored in a database, providing a comprehensive audit trail of document interactions for compliance purposes and accountability.
5. **Enhanced Security:** The system ensures secure access to documents, with role-based permissions to control who can view, edit, or delete documents, safeguarding sensitive information and ensuring data integrity.
6. **Cloud Infrastructure:** Leveraging cloud services such as Linux VMs for web application hosting and storage SQL services, the solution offers scalability, reliability, and performance to meet the document storage and retrieval needs of the mining company.
7. **Improved Compliance:** By centralizing document management and maintaining audit trails of document access, the solution helps the mining company comply with regulatory requirements and industry standards related to asset documentation and data management.
8. **Streamlined Operations:** The system streamlines document retrieval processes, reducing manual effort and improving operational efficiency by ensuring that users have timely access to accurate and up-to-date asset-related information.

## Mining Info Management

**Scope:** The Mining Info Management solution is designed to streamline the process of accessing, interpreting, and managing data related to trucks loaded with mining materials. It involves the integration of 3rd party government portals to retrieve information about trucks, their loading status, and destination factory locations. The solution then interprets this data and seamlessly integrates it with the SAP system for inventory updating. Upon confirmation from SAP, acknowledgment is sent back to the 3rd party government portal, ensuring data synchronization and accuracy.

### Outcome:

1. **Efficient Data Retrieval:** The solution enables the mining company to access real-time data from 3rd party government portals regarding trucks loaded with mining materials, providing timely information for inventory management and logistics planning.
2. **Automated Data Interpretation:** By scanning and interpreting data from government portals, the solution automates the process of extracting relevant information about truck loads, reducing manual effort and errors in data interpretation.
3. **Seamless Integration with SAP:** Integrated with the SAP system, the solution facilitates automatic updating of inventory records based on the data obtained from government portals, ensuring accurate and up-to-date inventory management.
4. **Bidirectional Data Flow:** The solution establishes a bidirectional data flow between the mining company's systems and 3rd party government portals, enabling seamless data exchange and synchronization for improved operational efficiency.
5. **Cloud Infrastructure:** Leveraging cloud services such as Linux VMs for web application hosting and storage SQL services, the solution offers scalability, reliability, and performance to handle the processing and storage requirements of mining data.
6. **Enhanced Visibility and Control:** By providing real-time insights into truck loading activities and inventory levels, the solution enhances visibility and control over mining operations, enabling proactive decision-making and resource optimization.
7. **Compliance and Audit Trail:** The solution ensures compliance with regulatory requirements by accurately capturing and managing data related to truck loading and inventory movements, while also maintaining an audit trail for accountability and transparency.
8. **Improved Operational Efficiency:** By automating data retrieval, interpretation, and integration processes, the solution streamlines operations and reduces manual effort, allowing employees to focus on higher-value tasks and improving overall operational efficiency.

## Annexure D

### Staff Augmentation for IT Companies

1. Transform Edge
2. Alten Calsoft,
3. Integra
4. Asmaitha Wireless Technologies Pvt Ltd

Scope: Quick RPA team ramp-up through skilled talent provision.

Outcome: By providing skilled talents, InVibes enabled IT companies to achieve 100% productivity from day one across various verticals. This streamlined the process of building and scaling RPA teams.